



Abinger Road, London, W4  
Guide Price £2,150,000

**WHITMAN & CO.**

SALES · LETTINGS · COMMERCIAL



**CONTRACTS EXCHANGED** A beautifully presented semi-detached house with an impressive 85' south-west facing garden, located on a sought-after road in the Bedford Park Conservation Area. Arranged over three floors with bright and spacious rooms, the house comprises a master bedroom suite, four further bedrooms, a family bathroom, a wide entrance hall, a front reception room with a bay window, a full-width kitchen/family room with bi-fold doors leading onto the garden, a utility room, a cloakroom, a stunning and secluded 85' garden with a wider rear section and side access, and an air-conditioned garden studio office.

Abinger Road is a quiet residential street, just a short walk from the extensive amenities of Chiswick High Road. Transport links include Turnham Green and Stamford Brook stations, local bus routes, and the A4/M4 for routes in and out of London. No chain.

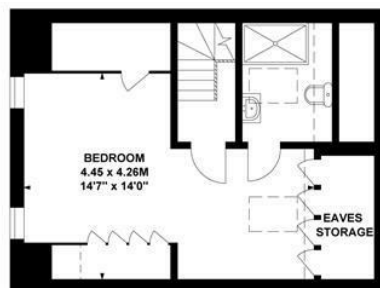


# Abinger Road, W4

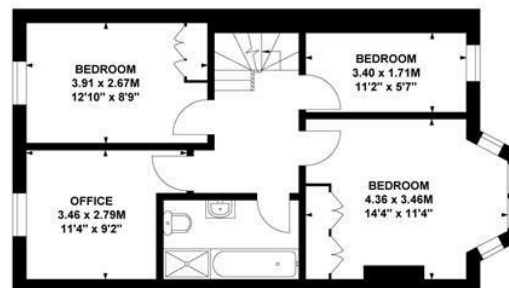
Approximate Gross Internal Area  
176.33 sq m / 1898 sq ft  
(Including Eaves Storage/Studio)

Eaves Storage  
3.07 sq m / 33 sq ft  
Shed  
8.80 sq m / 95 sq ft

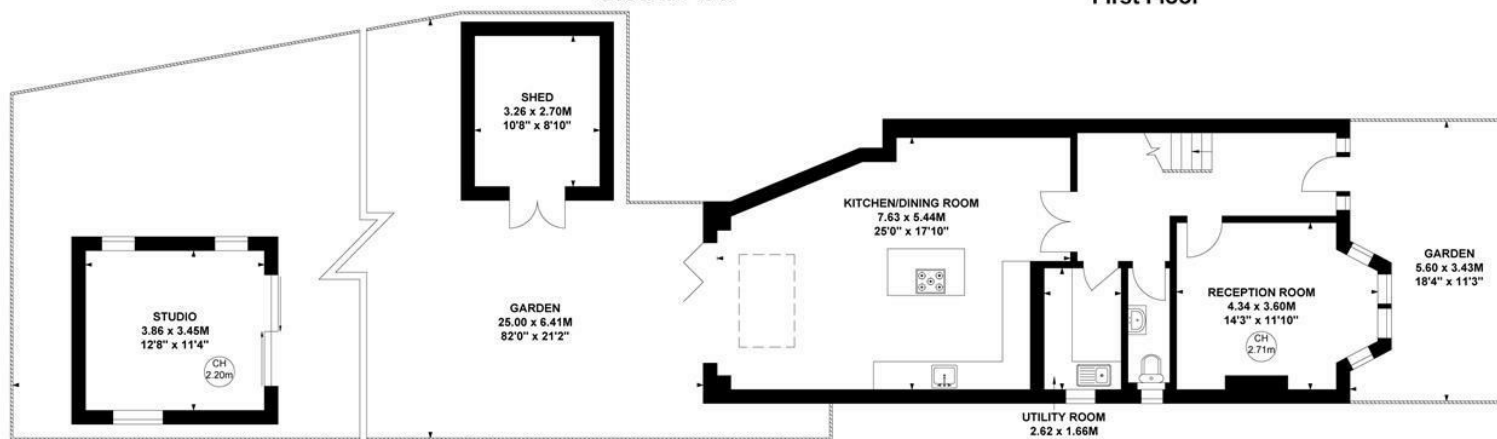
Key :  
CH - Ceiling Height



Second Floor



First Floor



Ground Floor

Not to scale, for guidance only and must not be relied upon as a statement of fact.

All measurements and areas are approximate only

- CONTRACTS EXCHANGED
- Bedford Park Conservation Area
- Impressive garden studio
- 85' South/West facing garden

- Period semi-detached house
- Five bedrooms including master suite
- No chain

CONTRACTS EXCHANGED  
Tenure - Freehold  
Local Authority - Hounslow  
Council Tax - Band G

